

Oakham Canal Green Corridor Project

- Incorporates, protects, and enhances, a **diverse range of wildlife habitats**
- Formalises and **improves countryside access** to the north of Oakham, providing **accessible footpaths** wherever possible
- Provides improved pedestrian access to the existing angling facility, **Oakham Enterprise Park** and **Rutland Garden Village**
- Provides opportunities for a **range of leisure activities**, in a coherent linear park setting
- Provides opportunities for **community engagement** and **skills development** through a range of **volunteer projects**.
- Supports **healthy living and lifestyles**
- Allows **interpretation** to be provided for areas of environmental or ecological interest





Project Support

- ▶ Registered charity – Community Interest Organisation
- ▶ Trustees include representatives of the Oakham Angling Society
- ▶ Over 100 local residents supporting the Project
- ▶ Over 200 'likes' on Facebook
- ▶ Regular communications with Cllr Lucy Stephenson and officers at RCC
- ▶ Voluntary support from Ecology Resources / Sustainable Land Trust
- ▶ Engagement with LRWT / RNHS

Project Area

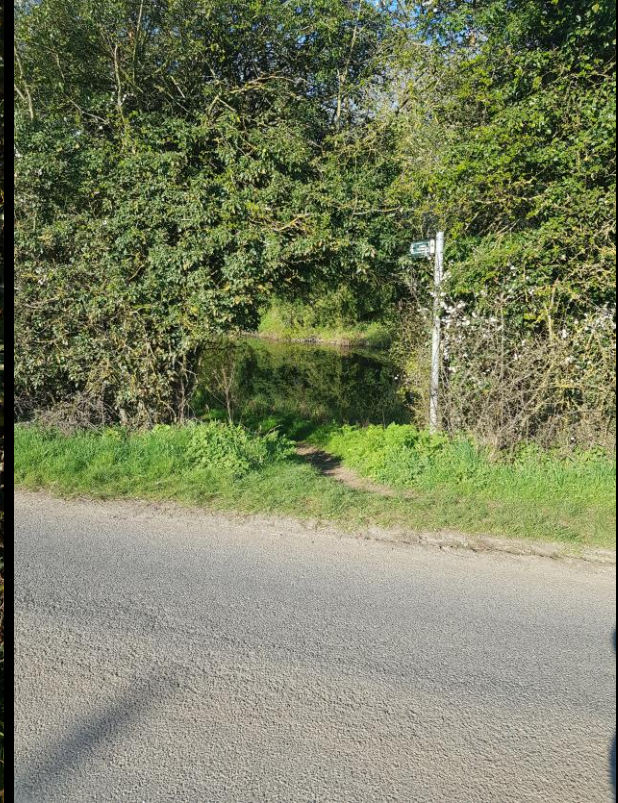
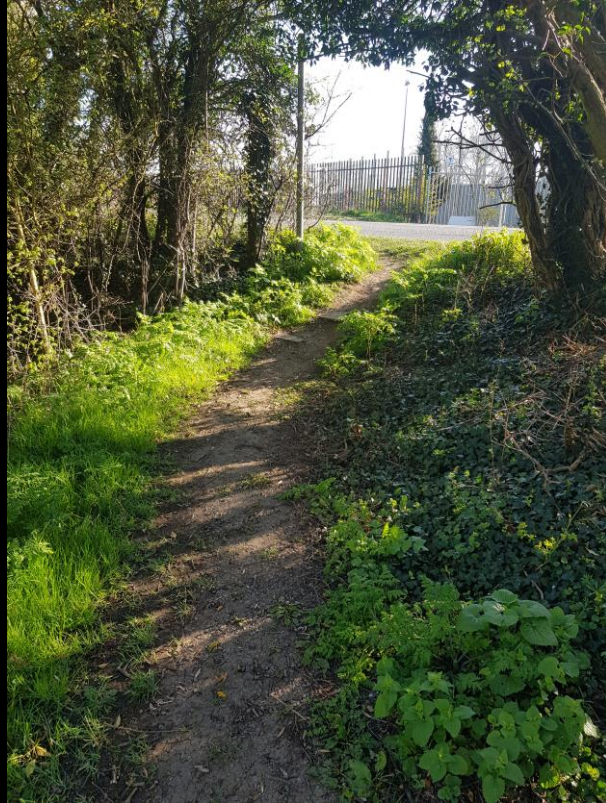
- Existing pedestrian route from Oakham town centre
- Permissive path at Springfield
- E154 / informal footpaths north of A606 to town boundary
- E154 north of the town boundary
- E154 north of Burley Road
- Informal footpaths to western banks



Diverse Habitats



E154 (north) Safety Issues



E154 (north) Maintenance Issues





Project Status

- Rationalise ownership at Springfield. Develop and implement maintenance strategy with residents
- Re-align E154 footpath / acquire access rights to the canal / woodland north of A606. Develop and implement maintenance strategy
- Support Oakham Angling Society in their ongoing maintenance activities
- Deliver E154 north access / footpath improvements
- Secure permissive access rights to western bank paths. Carry out footpath improvements. Develop and implement maintenance strategy
- Recruit, train and equip Rangers
- Provide interpretation, operate guided walks, update Oakham Canal Trail (environmental / historical)